

Symphony No. 3 in E \flat Major

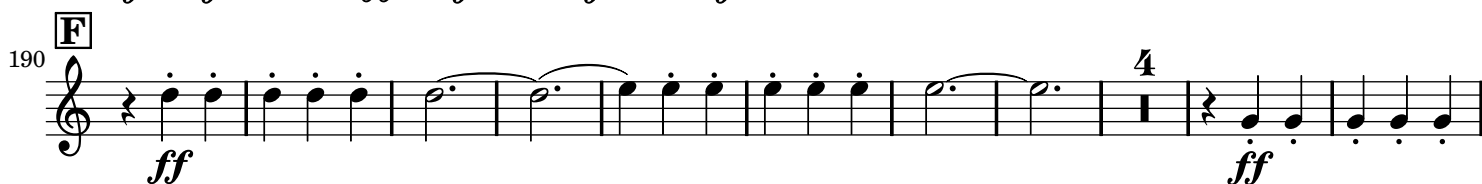
Eroica

Trumpet I

Ludwig van Beethoven (1770-1827)

Op. 55

Allegro con brio ($\text{♩} = 60$)



313  *sf* *f* *sf* *ff*

326  *ff* *f* *ff*

432  *cresc.* *f* *sf* *più f*

444  *ff* *sf* *sf* *sf* *sf* *sf* *ff*

463  *p* *f*

482  *cresc.* *ff* *sf* *sf* *sf* *sf*

520  *ff* *sf* *sf* *ff*

535  *sf* *sf* *sf* *sf* *sf* *sf* *cresc.* *ff* *f* *f* *f*

555  *f* *ff* *p* *pp* *cresc.*

634  *p* *cresc.*

657  *f*

669

Example 10

686

Marcia funebre

A **B**

Adagio assai (♩ = 80) **Maggiore**

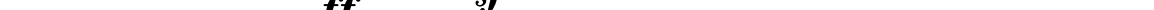
16 34 18 7

C 11

91

p *cresc.* *f* *sempre più f*

[illegible]

132 

149

The musical score for measures 149-158 is written on a single staff. Measure 149 begins with a treble clef and contains eighth notes G4, A4, B4, C5, D5, E5, F#5, and G5. Above measure 149 is a boxed letter 'E'. Measure 150 starts with a key signature change to one sharp (F#) and contains a whole rest. Above measure 150 is the number '9'. Measures 151-158 continue with various rhythmic patterns, including quarter notes, eighth notes, and sixteenth notes, often beamed together. Dynamic markings include *ff* at the start of measure 151, *sf* at the start of measures 153, 155, and 157.

167

4 **F**

18 **G** 14 **H** 38


p

Scherzo

Allegro vivace (♩. = 116)

30 62

ff



The first staff of music is in 3/4 time, marked 'Allegro vivace' with a tempo of 116 quarter notes per minute. It begins with a key signature change to one sharp (F#). The first section, marked '30', consists of a whole rest followed by a double bar line. The second section, marked '62', begins with a repeat sign and a whole rest, followed by a series of eighth and quarter notes, and ends with a double bar line. The dynamic marking 'ff' (fortissimo) is placed below the staff.

101



113 7 B 23

sf sf sf p

152 2

cresc. ff

163 1. 2. Trio 32 55

f f f f f f

259 1. 2. 6 95 C

ff

370

382 7 Alia breve (♩ = 116) 23

ff p

420 2

cresc. ff

431 Coda 12

f f cresc. ff ff ff

Finale

Allegro molto (♩ = 76)

6 17 5

ff sf sf ff p ff

38 1. 2. 3 3 7 3

p

74 3 8 3

f sf

98 **4** *f* *f* *ff* **A** **7**

119 **58 B 36 C 43 D 60 E** *ff*

325 **4**

340

F

350 **Poco Andante** (♩ = 108) **32** *ffsf sf sf sf sf*

391 *sf sf sf sf sf* **G** **17** *f*

417 **2 12 Presto** (♩ = 116) **6** *ff ff ff sf sf*

445 *sf sf sf sf sf sf sf*

456 *sf sf sf sf sempre più f ff*

466